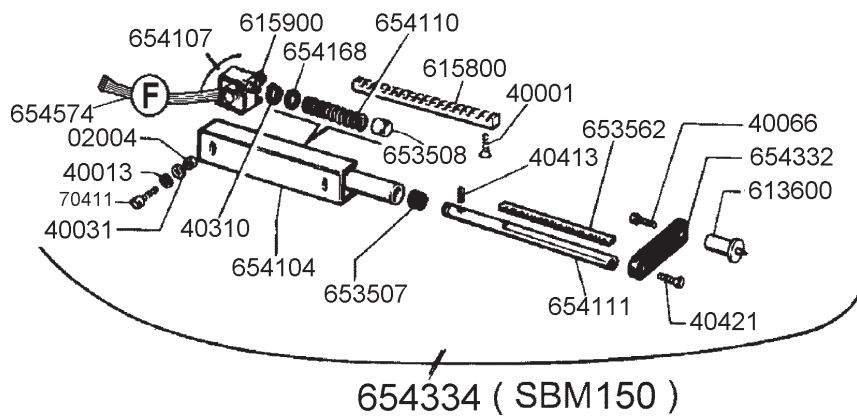
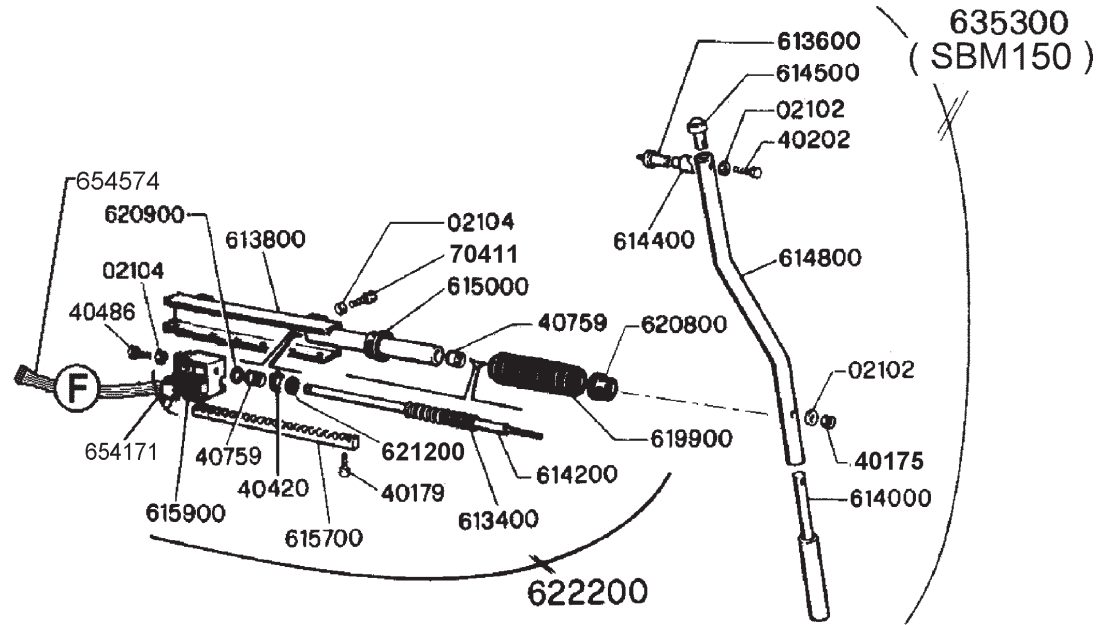
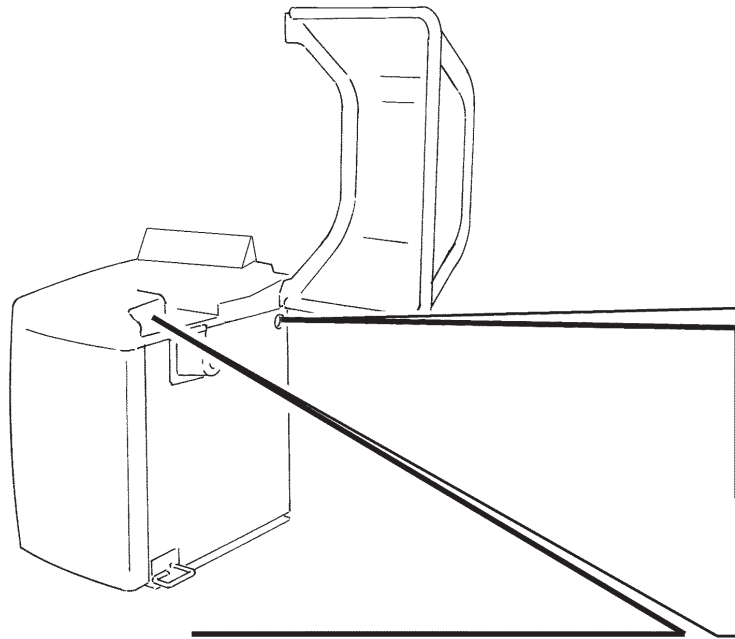
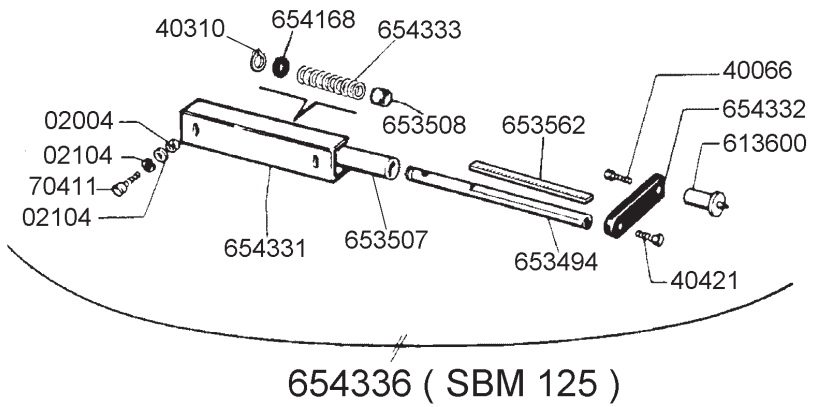


• 115V  
 ★ 230V

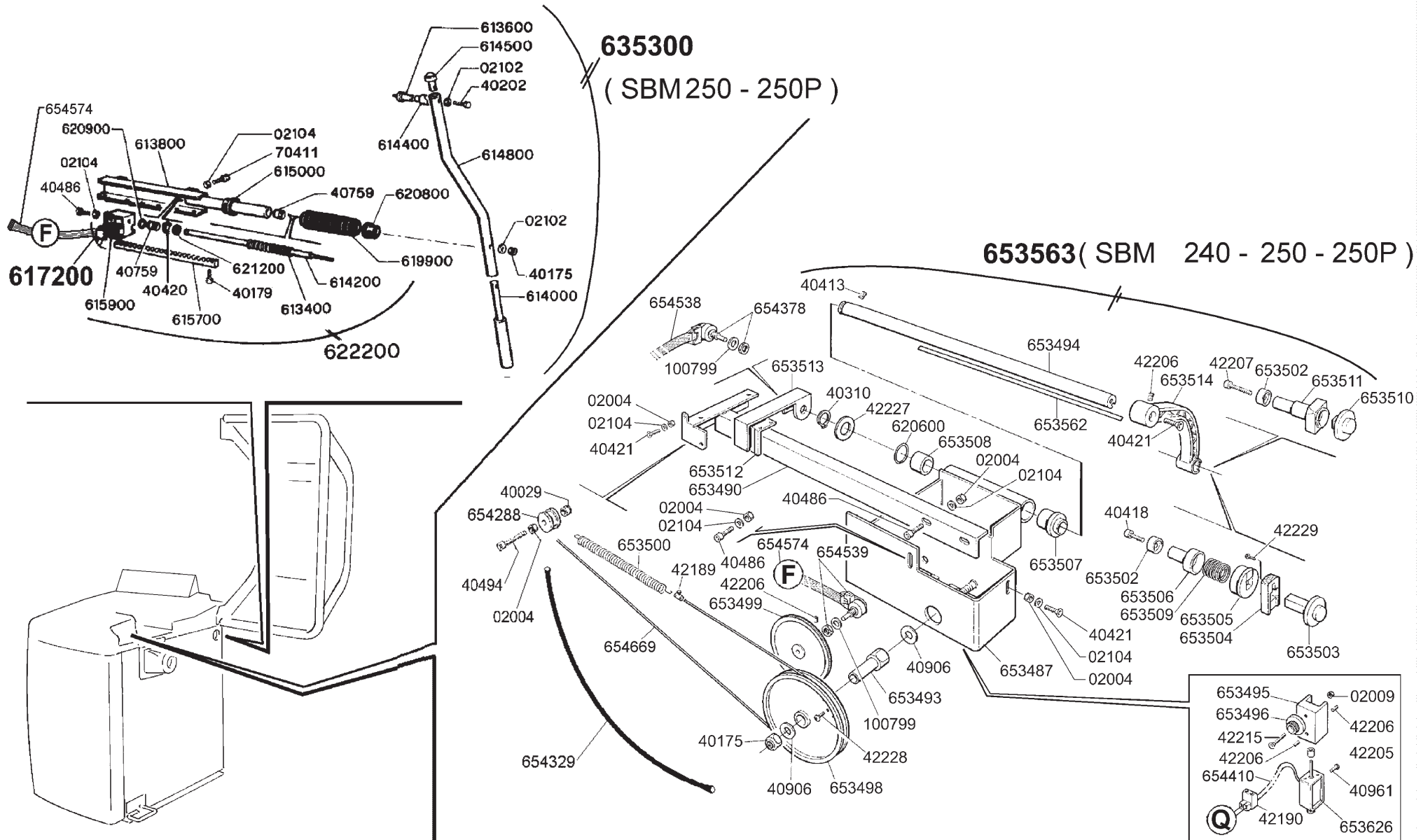


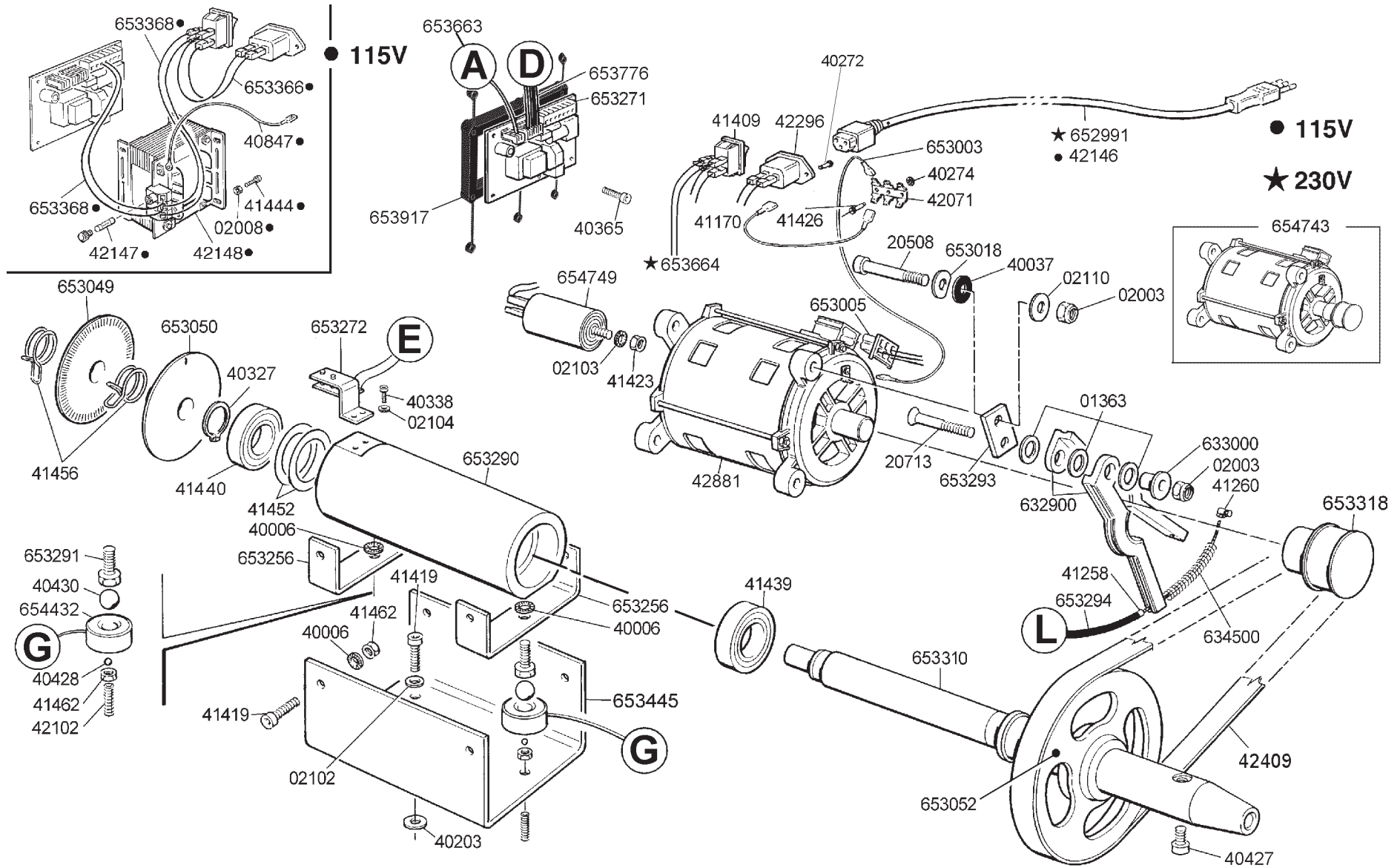


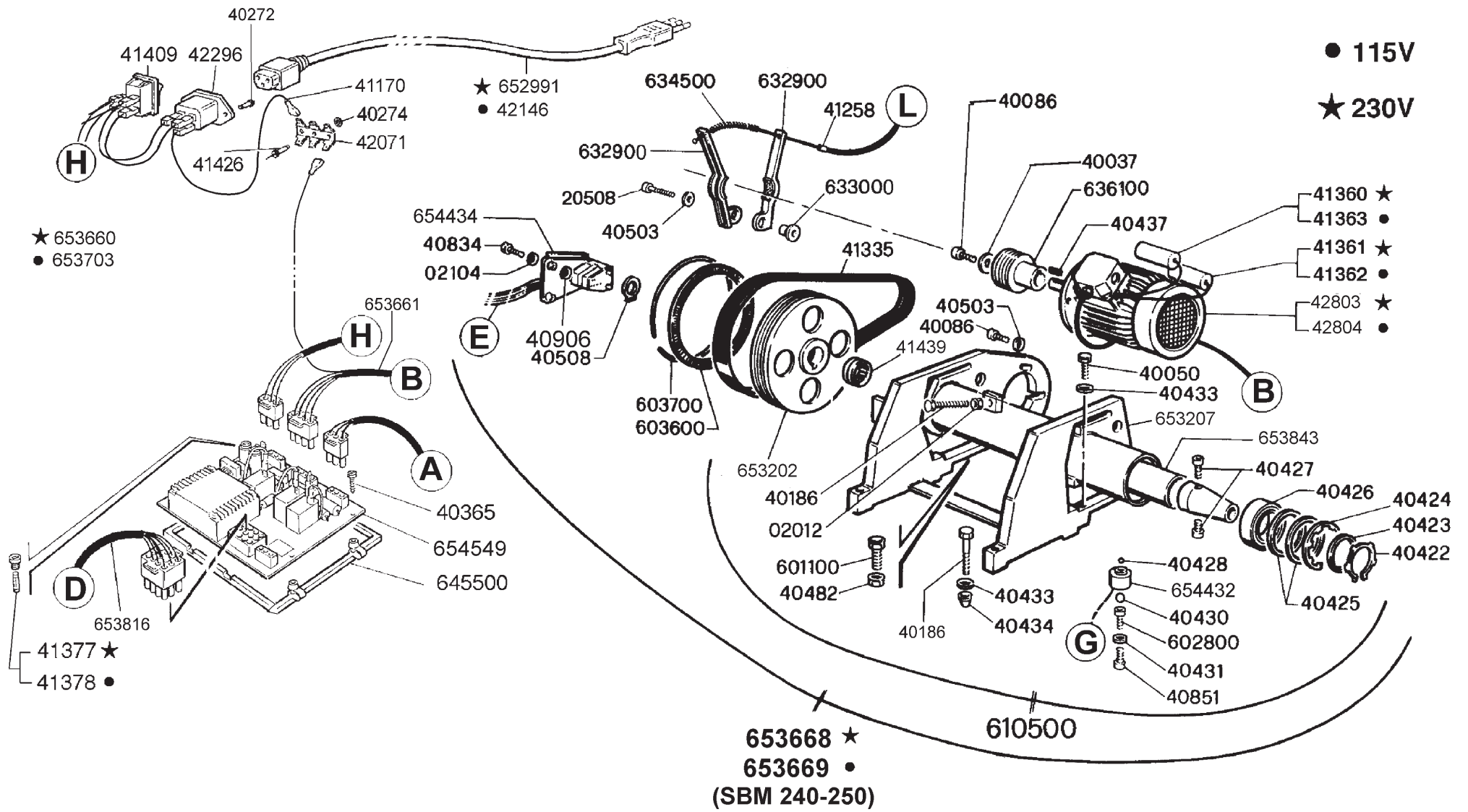
654334 ( SBM150 )

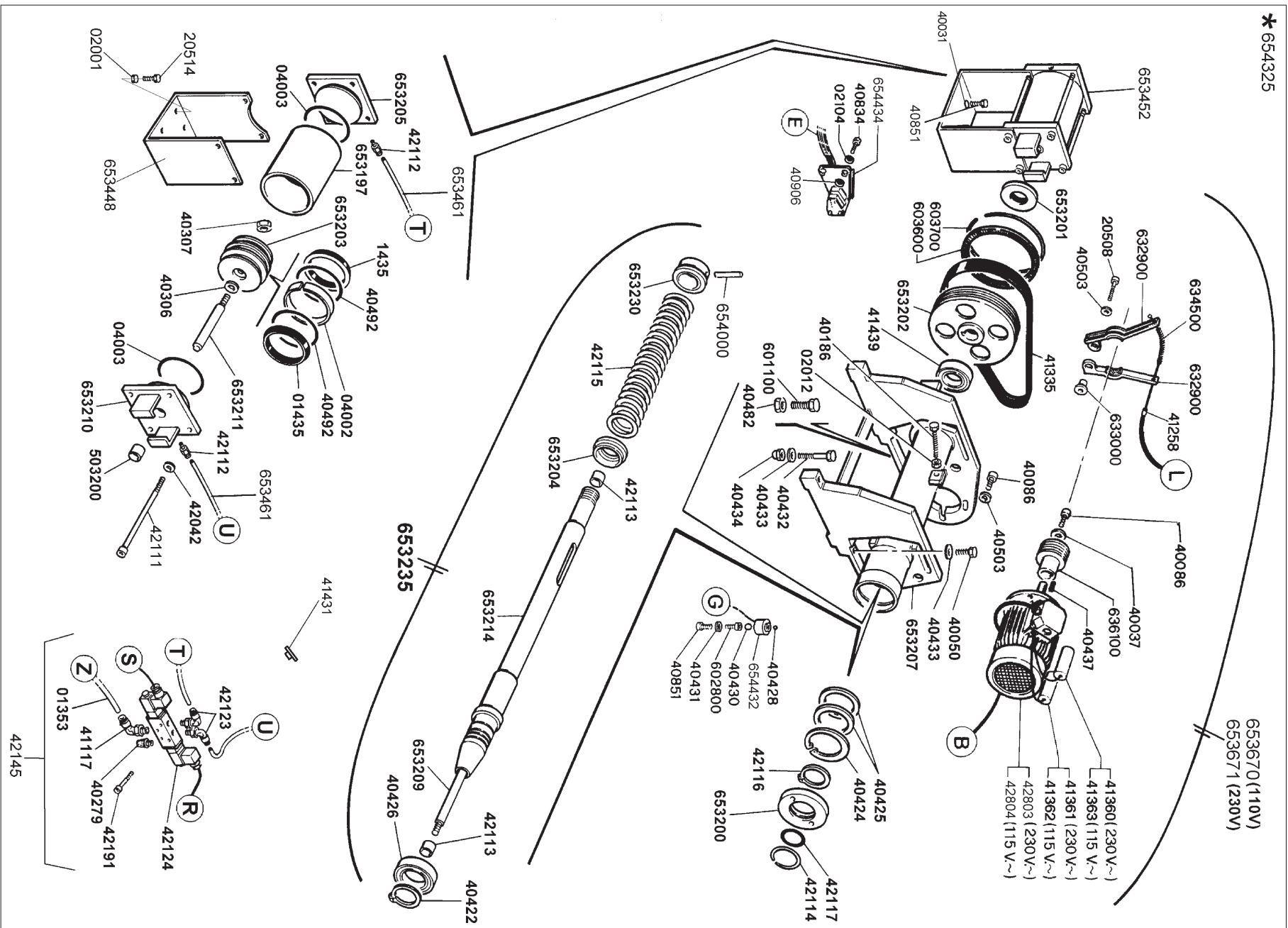


654336 ( SBM 125 )

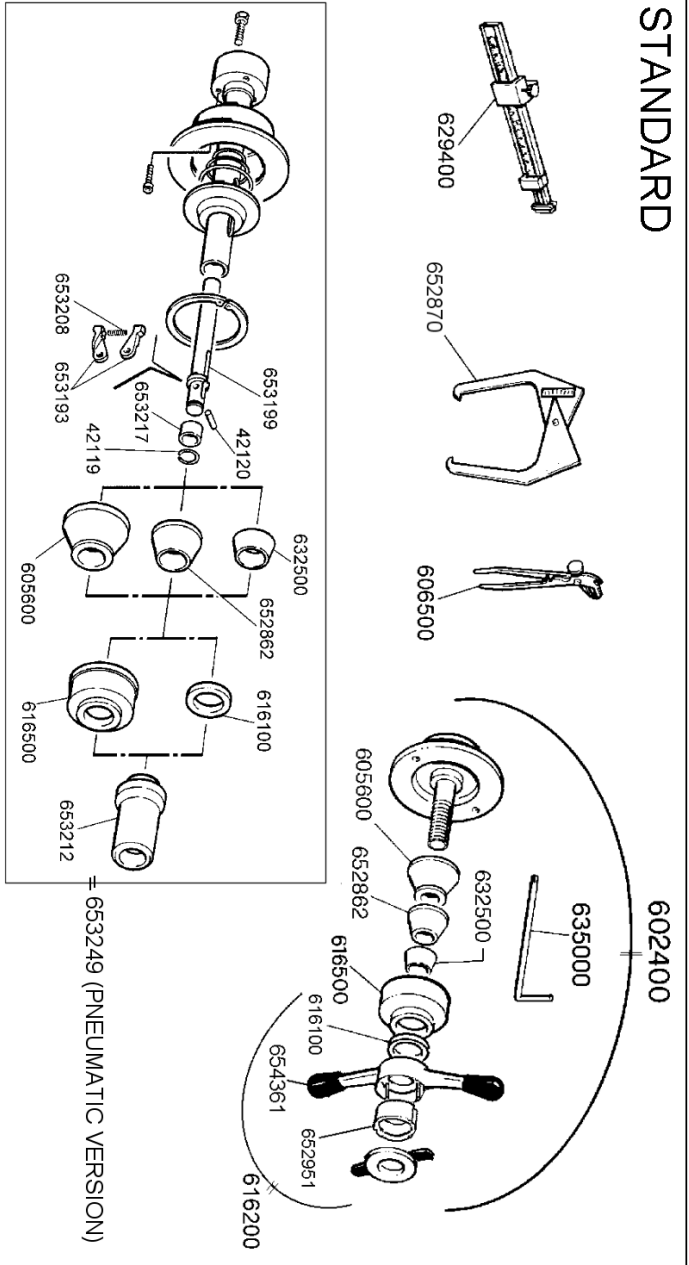




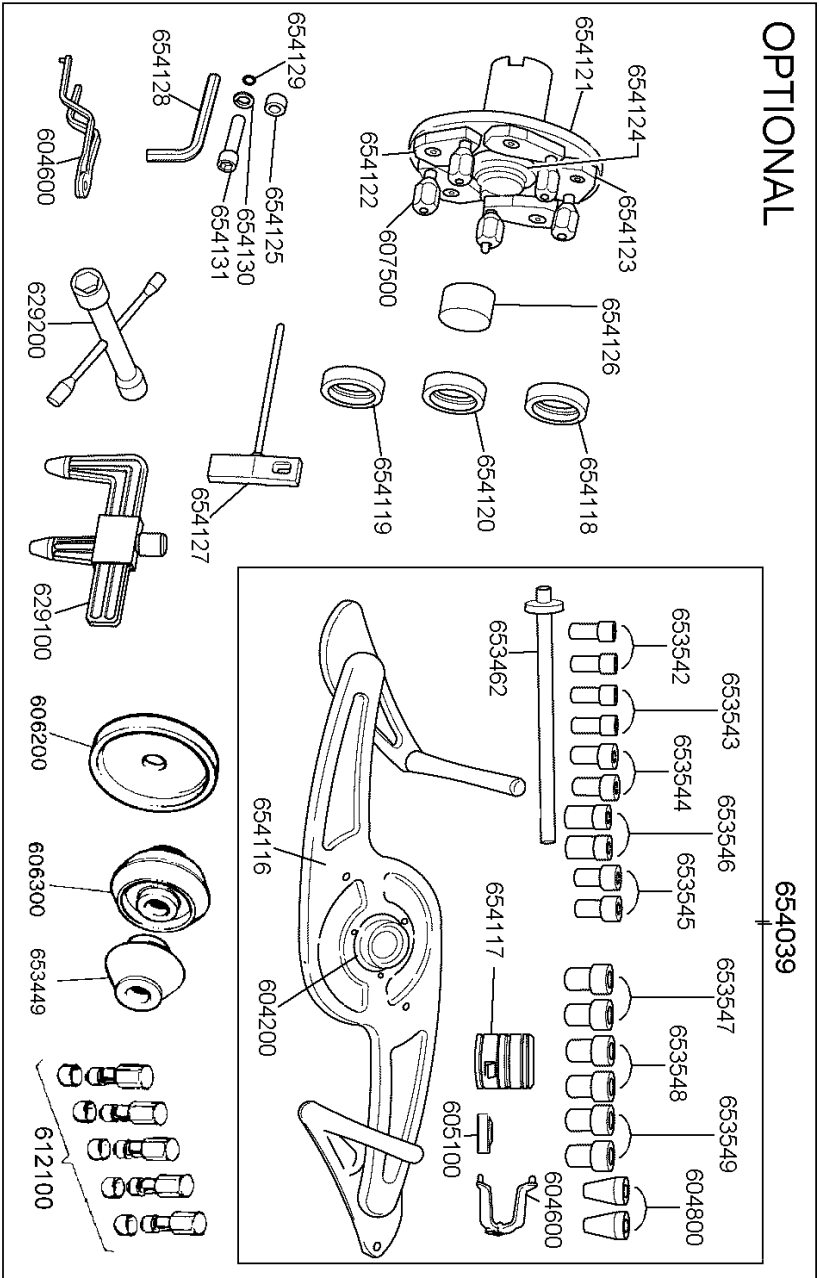


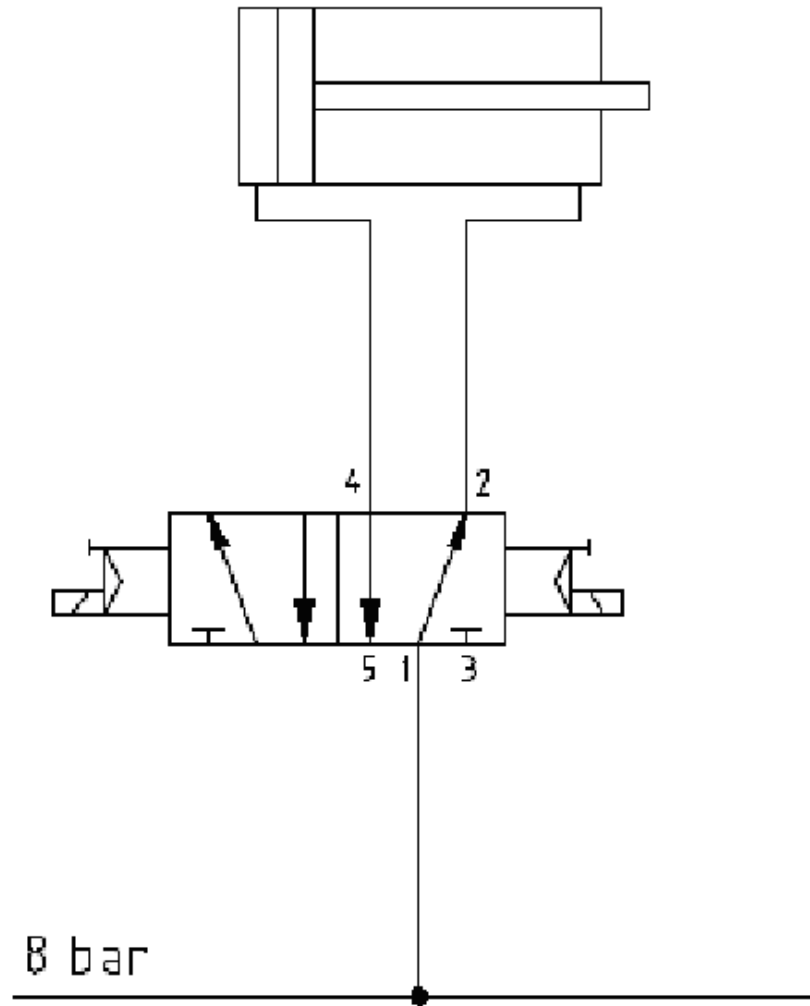


STANDARD



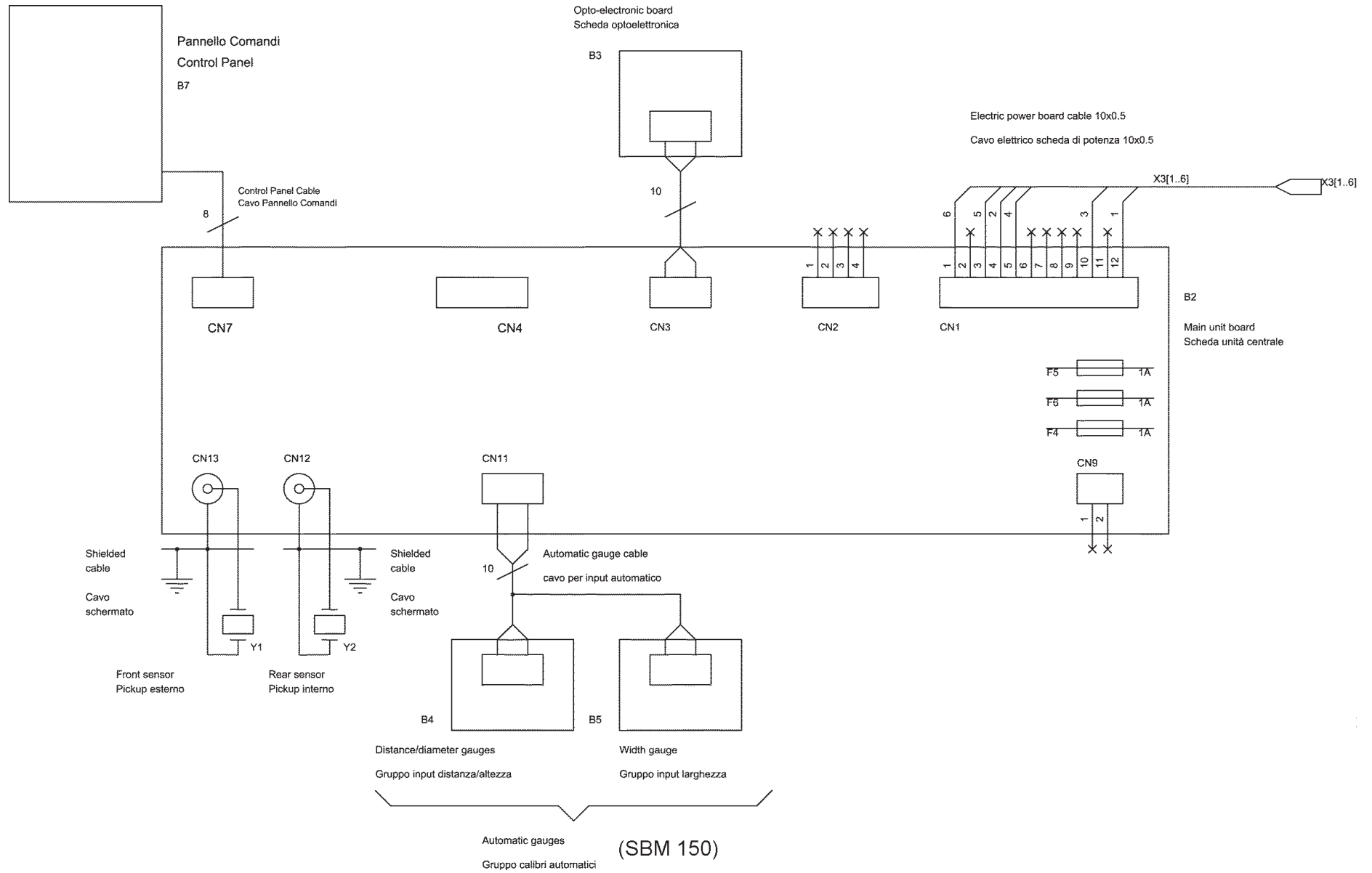
OPTIONAL





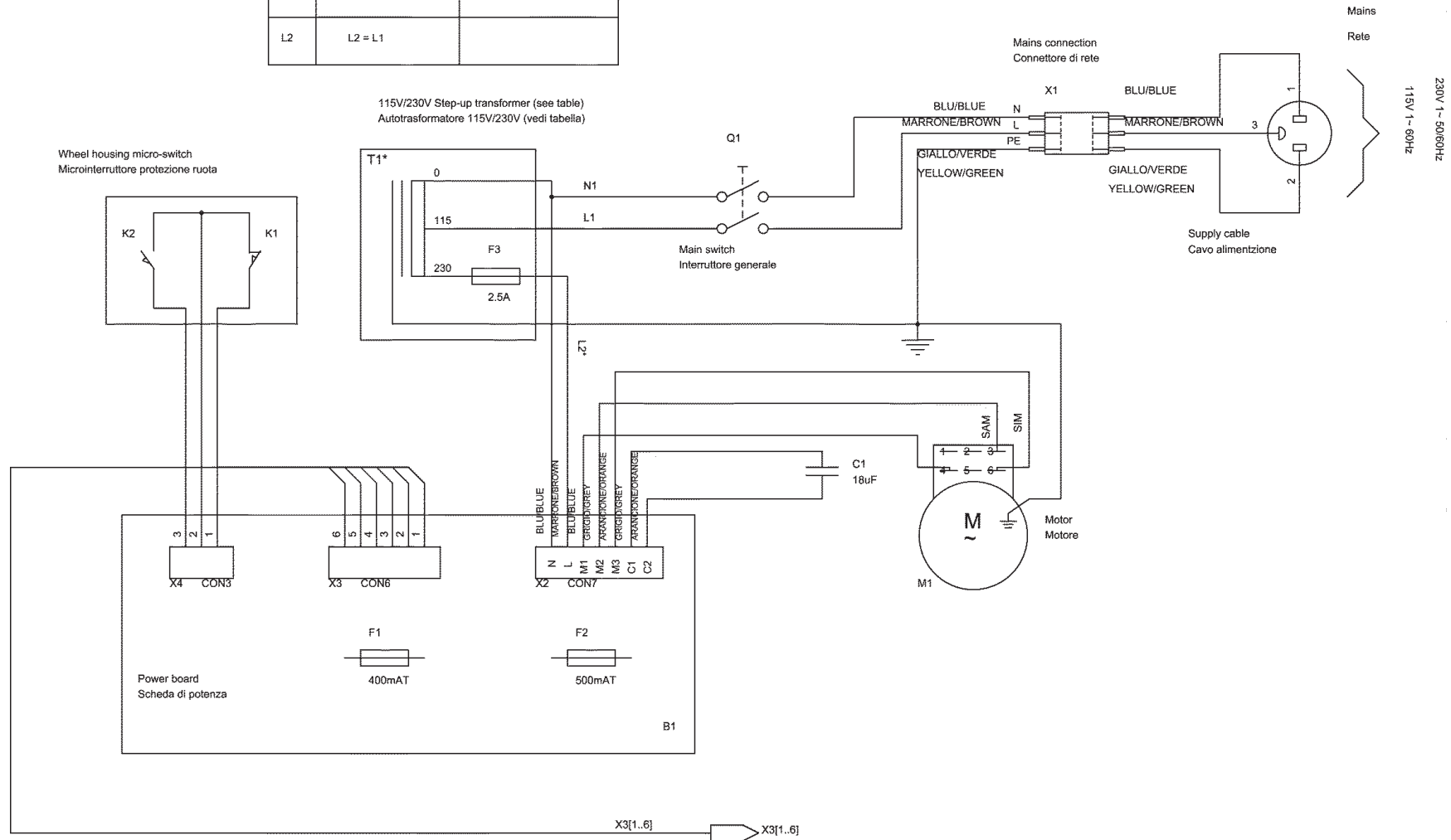


**SCHEMA ELETTRICO EQUILIBRATRICE SBM 125-150 A 115/230V**  
**SBM 125-150 BALANCING MACHINE ELECTRIC DIAGRAM AT 115/230V**  
**DIAGRAMA DE CONEXION BALANCEADORA SBM 125-150 A 115/230V**

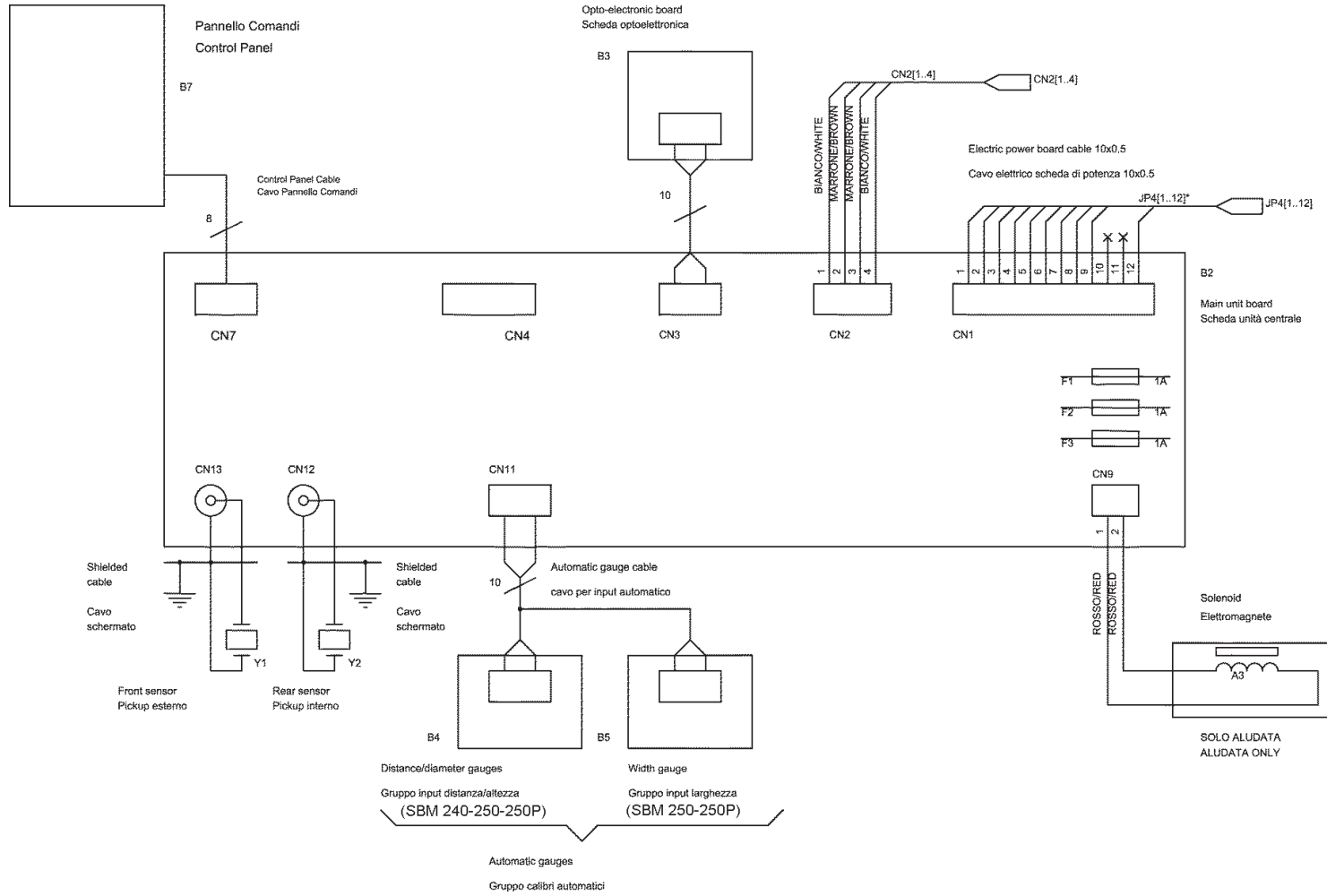


**SCHEMA ELETTRICO EQUILBRATRICE SBM 125-150 A 115/230V**  
**SBM 125-150 BALANCING MACHINE ELECTRIC DIAGRAM AT 115/230V**  
**DIAGRAMA DE CONEXION BALANCEADORA SBM 125-150 A 115/230V**

*	mains/rete: 230V	mains/rete: 115V
T1	—	T1
L2	L2 = L1	



**SCHEMA ELETTRICO EQUILIBRATRICE SBM 240-250-250P A 115/230V**  
**SBM 240-250-250P BALANCING MACHINE ELECTRIC DIAGRAM AT 115/230V**  
**DIAGRAMA DE CONEXION BALANCEADORA SBM 240-250-250P A 115/230V**



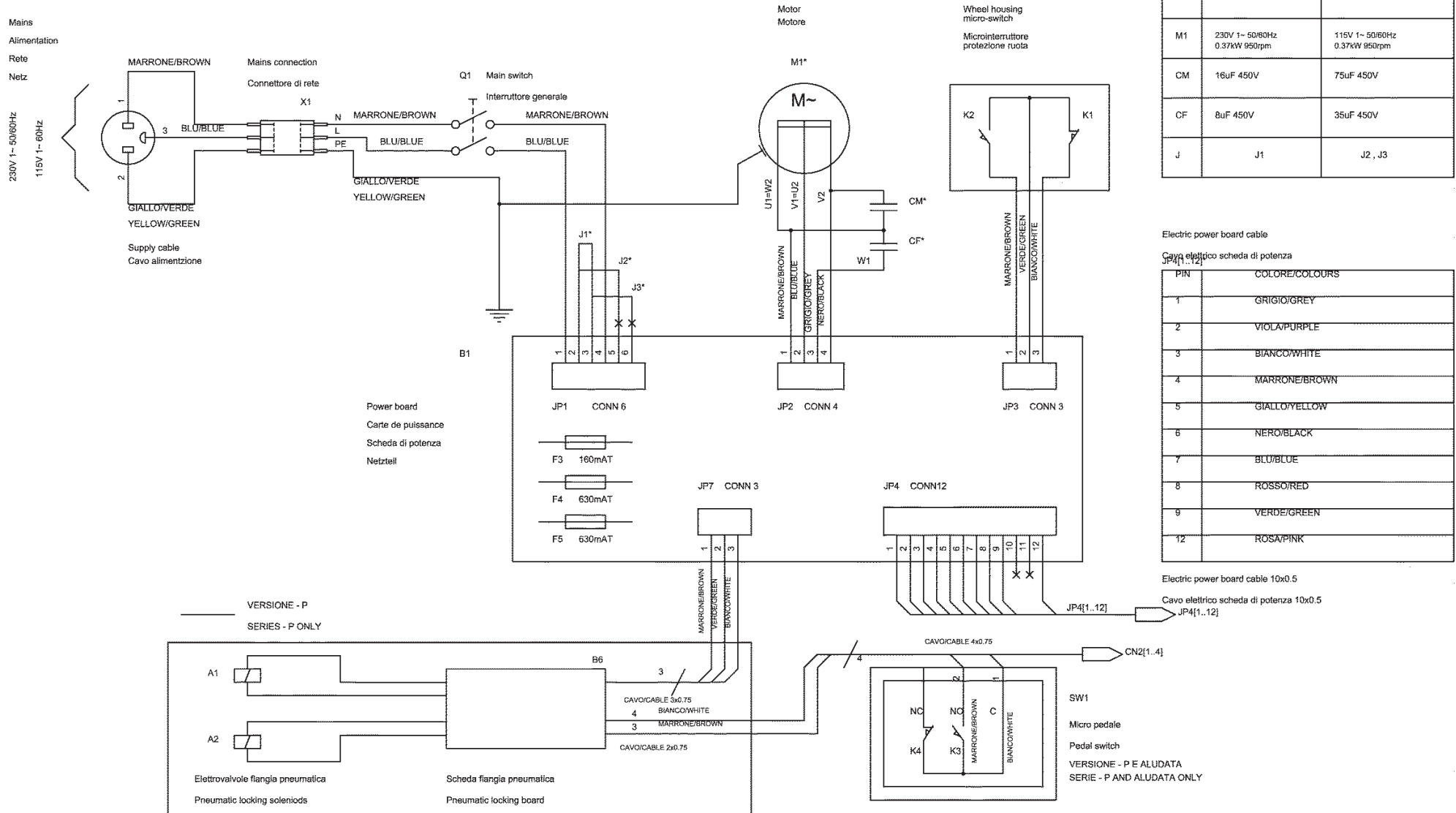
Electric power board cable

Cavo elettrico scheda di potenza

JP4[1..12]\*

PIN	COLORE/COLOURS
1	GRIGIO/GREY
2	VIOLO/PURPLE
3	BIANCO/WHITE
4	MARRONE/BROWN
5	GIALLO/YELLOW
6	NERO/BLACK
7	BLU/BLUE
8	ROSSO/RED
9	VERDE/GREEN
12	ROSA/PINK

**SCHEMA ELETTRICO EQUILIBRATRICE SBM 240-250-250P A 115/230V**  
**SBM 240-250-250P BALANCING MACHINE ELECTRIC DIAGRAM AT 115/230V**  
**DIAGRAMA DE CONEXION BALANCEADORA SBM 240-250-250P A 115/230V**



*	230V	115V
M1	230V 1~ 50/60Hz 0.37kW 950rpm	115V 1~ 50/60Hz 0.37kW 950rpm
CM	16uF 450V	75uF 450V
CF	8uF 450V	35uF 450V
J	J1	J2, J3

Electric power board cable

Cavo elettrico scheda di potenza

PIN	COLORE/COLOURS
1	GRIGIO/GREY
2	VIOLA/PURPLE
3	BIANCO/WHITE
4	MARRONE/BROWN
5	GIALLO/YELLOW
6	NERO/BLACK
7	BLU/BLUE
8	ROSSO/RED
9	VERDE/GREEN
12	ROSA/PINK

Electric power board cable 10x0.5

Cavo elettrico scheda di potenza 10x0.5

VERSIONE - P  
 SERIES - P ONLY